

**Omaha Valentine Sectional**  
**February 9 – 12, 2012**  
**Westside Community Conference Center**  
**3534 S. 108 St.**  
**Omaha, NE 68144**

**Schedule of Events:**

**Thursday, February 9**

7:00 p.m.—Stratified Open Pairs

—199er Pairs

**Friday, February 10**

1:00 p.m.—Stratified Open Pairs (Single Session)

—199er Pairs

7:00 p.m.—Stratified Open Pairs (Single Session)

—199er Pairs

**Saturday, February 11**

1:00 p.m.—Stratified Open Pairs (first of two sessions)\*

—199er Pairs (Single Session)

7:00 p.m.—Stratified Open Pairs (second of two sessions)\*

—199er Pairs (Single Session)

\*Single Session side game will be available for those wishing to play only one session.

All pair games are single session events unless otherwise noted.

Single Session \$8.50 for ACBL Members \$9.50 for Non-Members

**Sunday, February 12**



10:00 a.m.—Stratified Swiss Teams—two sessions—continuous play with lunch provided

—199er Swiss Teams—single session—four rounds of seven boards (no lunch)



Sunday Swiss Teams \$100.00 per team including meal. Additional team members pay \$10.00 meal cost.



Open Swiss Team will be seven rounds of seven boards each.



Strata will be based on the average point holding for all team members.

Example: Total points for a 5-person team=2499/five team members=499.8 and will play in C



Newcomer Swiss Teams \$30.00 for single session and no meal.



**STRATIFICATION:**

Open events:

A 1500+    B 500-1500    C 0-500

199er events:

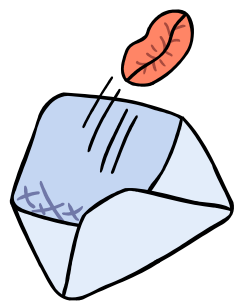
A 100-199    B 50-100    C 0-50

Sanction Number: S1202001

Sponsored by Cornhusker Unit #241

ACBL Cornhusker Unit 241  
c/o Chris Hatton  
2805 South 179<sup>th</sup> Plz #208  
Omaha, NE 68130

**PRSRT STD**  
U.S. POSTAGE  
PAID  
OMAHA, NE  
PERMIT NO. 484



Director in Charge:	Larry Brobst	Assisted by: Jim Nash
Hospitality:	Barbara Kushner	
Caddies:	Ken McNary	
Rules & Ethics:	Minna Lou Mercer	
Tournament Coordinator:	Claire Flatowicz	
Partnerships:	Marianne Johansson	402-493-2110

**Directions** to Westside Community Conference Center (WCCC): From northbound Interstate 680 take the Center Street exit and proceed east to the first stop light. This is the corner of 108<sup>th</sup> and Center and Don & Millie’s Restaurant sits on the SE corner. Turn South onto 108<sup>th</sup> Street and proceed to Grover Street. The WCCC is on the west side of 108<sup>th</sup> and can be seen from the intersection of 108<sup>th</sup> & Grover.

Additional parking is available in the lots at the back of the building. The Tournament will be played in the “Westside Room” at the end of the hall to the right of the front entrance of the building.

**HOTELS**

La Quinta Inn (Formerly Baymont Inn)	107 <sup>th</sup> & M St	402-592-5200	Bridge Rate \$46.50 plus tax** ** Subject to change
Best Western	108 <sup>th</sup> & L	402-339-7400	
Holiday Inn Express	108 <sup>th</sup> & J	402-339-8111	
Super 8	108 <sup>th</sup> & M St	402-339-2250	